



Sunshine Coast University Hospital

SCUH Update

Regional Development Australia – Sunshine Coast

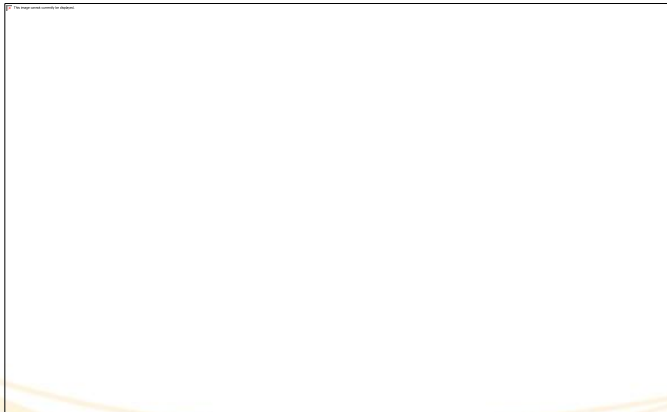
7 Feb 2011

we're building a
healthier
community

The Vision



A unique project in Australia



- \$2.03bn investment
- 738 bed tertiary teaching hospital
 - 450 beds by 2016
 - 738 beds by 2021
- Co-located 200 bed private hospital
 - To open in 2013
 - Public beds available to 2018
- Academic and research centre
- Commercial developments
- 3,500 car park spaces

Putting this in context

- Major increase in service capability
 - 95% of patients treated on Coast
- Every day
 - 250 emergency visits
 - 1,200 outpatient visits
 - 175 admissions to hospital
- New standards in patient care
 - 75% single rooms
- Up to 15,000 site visits per day

Job creation

- **Construction jobs**
 - 2,000 + workers on site at peak construction
 - 11,000 + jobs over life of construction
- **Hospital jobs**
 - 2,500 + new jobs
 - 3,500+ staff in total
- **Private hospital**
 - 300+ construction jobs
 - 1,000+ staff

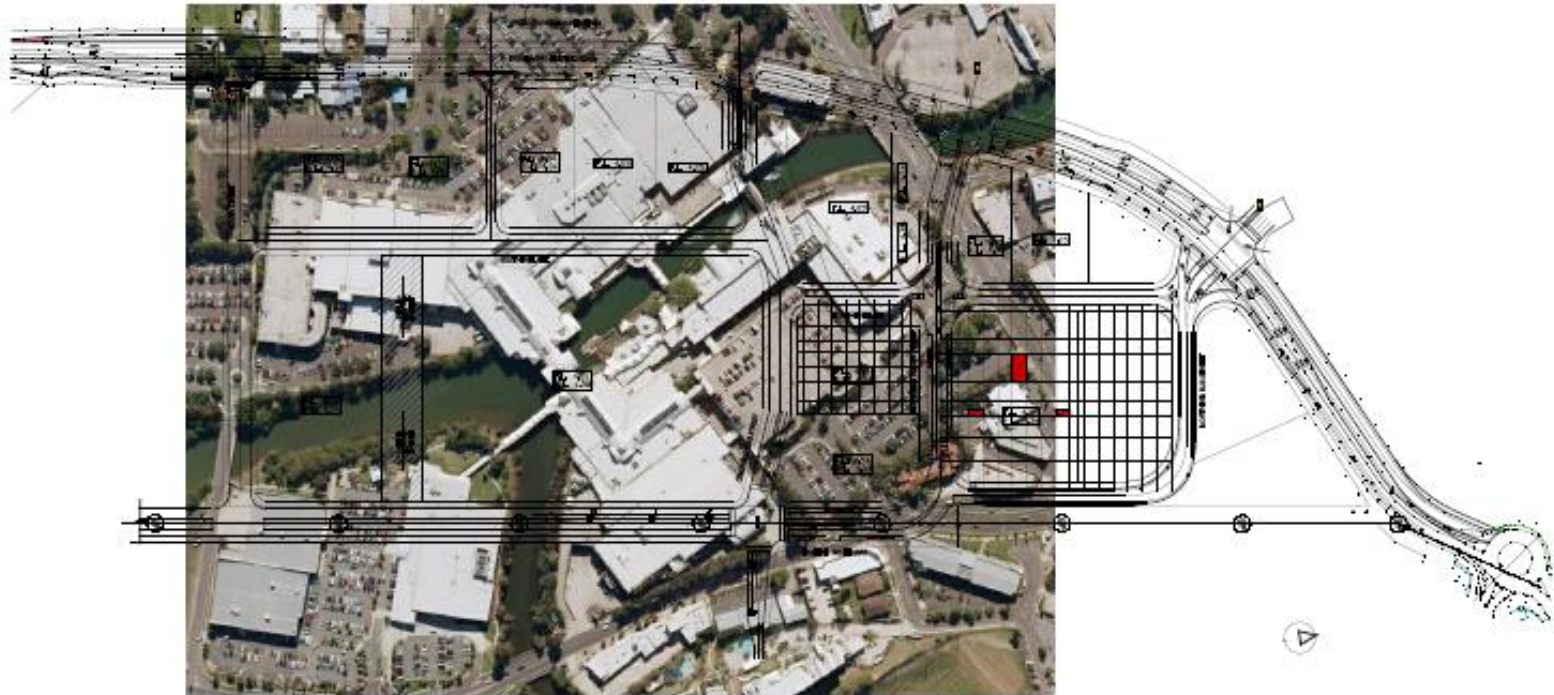
Wider impacts

- Catalyst for Kawana Town Centre
- \$2bn capital investment
- \$0.5billion per annum operating cost
- 15,000 visitors per day
- Further growth potential beyond 2021

Preliminary Masterplan



Site comparison – Sunshine Plaza



SUNSHINE PLAZA, MAROOCHYDORE

SUNSHINE COAST UNIVERSITY HOSPITAL

CONRAD
GARGETT
ARCHITECTURE

Project timetable

	Quarter Commencing															Financial Year						
	Apr-10	Jul-10	Oct-10	Jan-11	Apr-11	Jul-11	Oct-11	Jan-12	Apr-12	Jul-12	Oct-12	Jan-13	Apr-13	Jul-13	Oct-13	2014	2015	2016	2017	2018		
Private Hospital																						
Tender	[Orange bar]																					
Contract Award					▲																	
Construction					[Orange bar]																	
Hospital Open																						
Service Purchase (beds)															▲	70	110	110	110	80		
SCUH																						
Planning	[Blue bar]																					
Procurement Launch					▲																	
Procurement Period					[Blue bar]																	
Contract Signed												▲										
Construction												[Blue bar]										
SCUH Opens																					▲	

Project status

- **Private Hospital**
 - Two bids received Nov 2010
 - Ramsay Healthcare
 - Healthscope
 - Contract to be signed April 2011
- **SCUH**
 - Clinical planning complete
 - Market sounding complete
 - Final employee consultations underway (PPP)
 - Procurement launch April 2011

District developments

- **2011 - SCUH transition services**
 - Nambour – cath lab, endoscopy suite, vascular surgery, neurosurgery
 - Caloundra - emergency department and 40 new staff
 - Radiation oncology contract
- **From 2016**
 - Nambour ED remains open
 - Nambour remains as major acute hospital
 - Caloundra becomes community health hub

SCUH Project Team

